



リンダ  
Linda



ドービー  
Doby

### 必要なもの\_Required Tools

用意するものはハサミだけ！ノリは使いません。  
Only tool you need is scissors! No glue needed.



### ポイント\_Tips

以下の点に注意しながら、パイプを組み立てていきます。  
Follow the tips and assemble the pipes as shown below.

点線は谷折り  
Fold on the dotted lines.

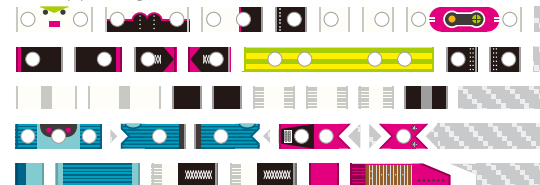
平たくつぶしてから曲げる  
Flatten and then fold.

↑  
↑

パーツ番号に矢印がある場合は  
そちらが上側  
Some parts have an arrow above the  
part number indicating which  
side is up.

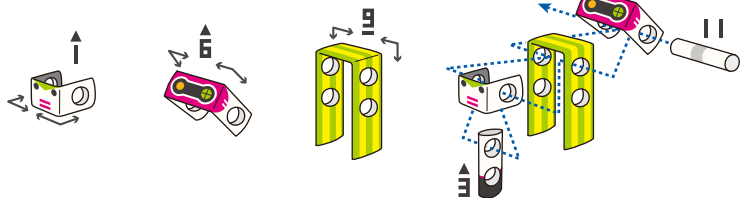
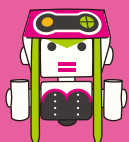
### カット図\_Cutting Diagram

切り取り線にそってハサミで切り、全てのパーツを切り離します。  
Cut the pipes along the white lines.



▲ ハサミの取り扱いには十分ご注意ください。Please handle scissors with care.  
▲ 本品を水に濡らさないで下さい。Keep away from water.

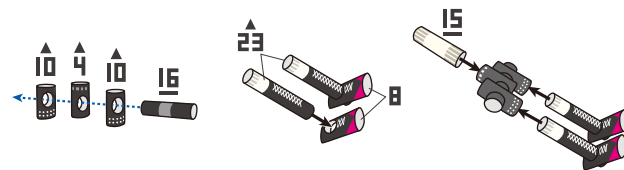
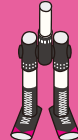
#### head & shoulder



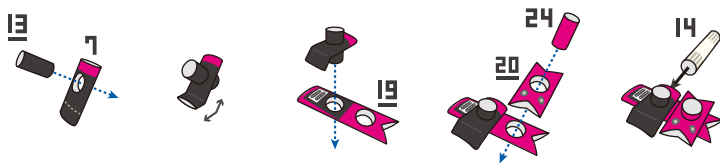
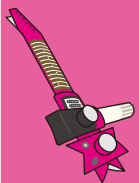
#### right hand



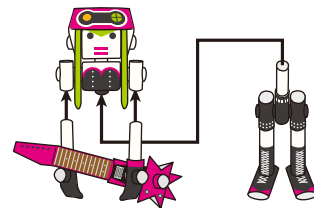
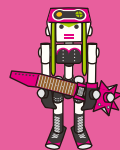
#### foot



#### left hand & guitar



#### finish



#### Doby

